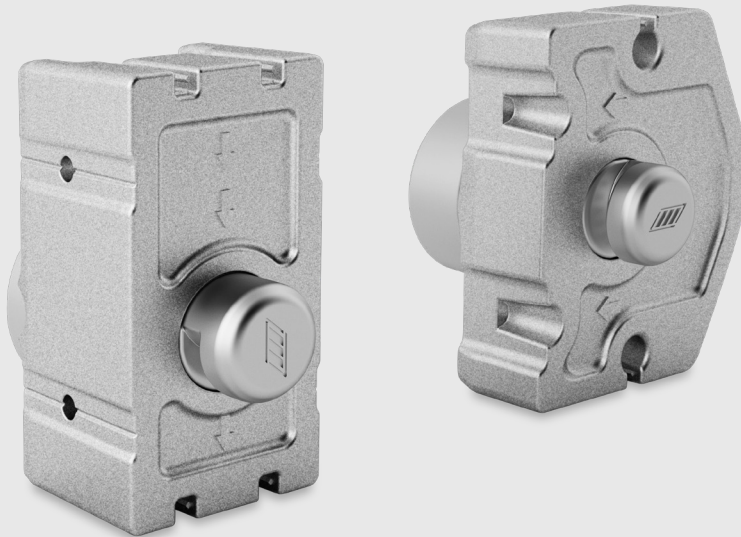
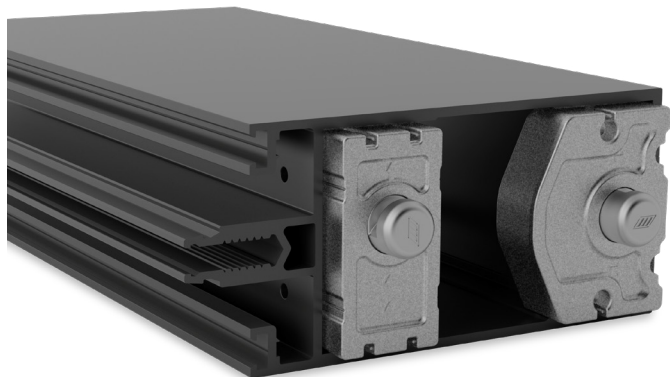


MAKALU EVOLUTION



*Profile saving
and less processing
required*

MAKALU EVOLUTION



1rubber drainage cap →

Refined self-locking junction system consisting of die-cast aluminum double bracket for curtain wall with frontal assembly. Automatic anchoring enabled by spring-loaded buttons with universal groove. It can be used to install all the transoms of the same series with different widths. It allows an easy and quick positioning of the transom as well as reducing production costs by avoiding profile notching and frontal fastening. A special rubber drainage cap¹ can be added for water draining between mullion and transom.

- +** Quick and easy assembly
- +** Self-locking button
- +** Profile saving and less processing required
- +** Flexible assembly