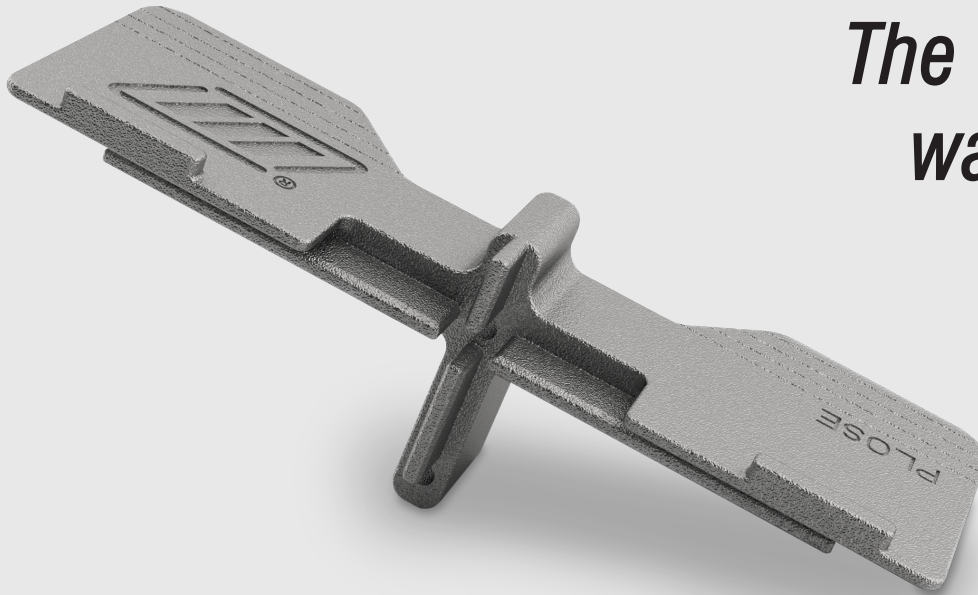


PLOSE



*The curtain
wall, at its best*



PLOSE



Die-cast aluminum support for heavy glazing of curtain walls. Adjustable depending on the glass thickness, assembled directly on the cross sections with self-drilling screws, avoiding the use of any additional frontal bracket. **Patented.**

- + Glass load capacity significantly increased
- + Front assembly of transoms and mullions