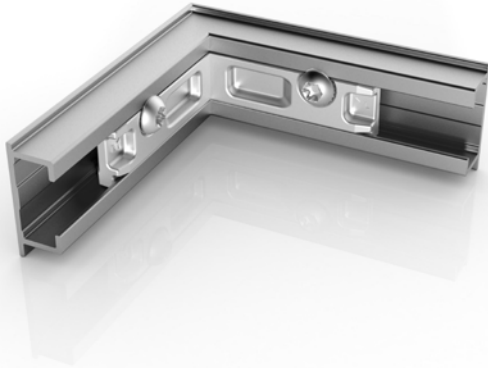


MARMOLADA EDGE



Efficient and dynamic

MARMOLADA EDGE



Internal corner joint for open profiles in die-cast aluminium, mostly used to tighten and align frames of rolling shutters, neon signs or notice boards. It can be installed without any processing. It has specific glue channels to guarantee perfect sealing and greater strength while avoiding any waste or spill. **Patented.**

- ⊕ **Secure and align without profile deformation**
- ⊕ **No profile processing**